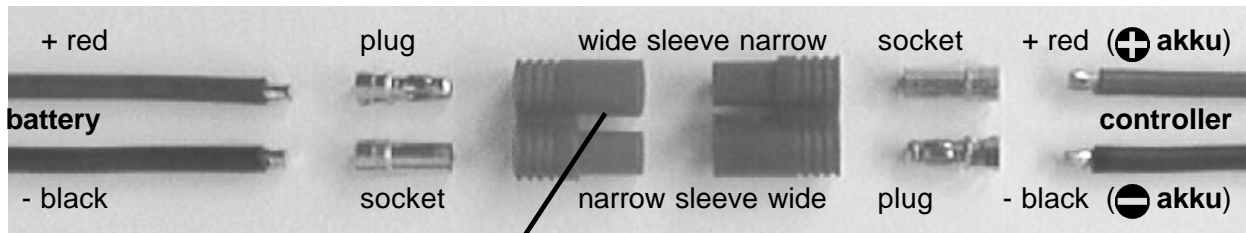


## 7 Recommended connector systems and mounting instructions

### 7.1 3.5 mm gold-contact connector system (pp35); max. load > 80A



**Caution:** remove locating lug from battery cable. Do not remove lug from any cables attached to controllers or charge leads!

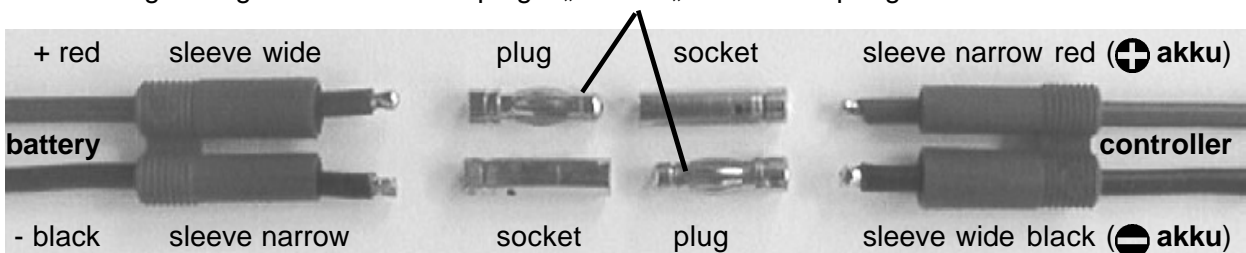
**Manufacturer's information:** the **pp35** plug is very short, and this presents the danger that the contact spring could lose its resilience (spring force) due to excessive heat build-up during the soldering process. You can side-step the problem by keeping the temperature below 200°C as follows: either remove the contact carefully before soldering, or simply push the plug into a piece of wet fine-grain sponge for soldering, or plug it in a 3.5 mm hole of a copper-block.

**Fit** the connectors in the order shown above; the contacts are pressed in as follows:

- Place plastic sleeve vertically on table, grip end up.
- Push contact down into sleeve.
- Place 2.5mm wide screwdriver blade on top of cable solder joint inside sleeve.
- Tap screwdriver to press contact into sleeve until latch engages.

### 7.2 4mm(CT4), 2mm(CT2) gold-contact connectors (rating CT4=80A; CT2=30A)

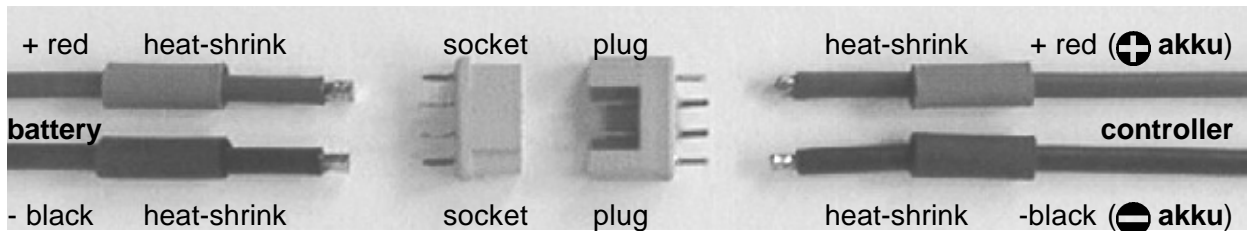
Distinguishing marks for suited plugs: „MC“ or „S“ contact spring embossment.



**Fit** the connectors in the order shown above; the contacts are pressed in as follows:

- Rest plastic sleeve on vice jaws with cables hanging down.
- Close vice jaws until cables are just free to move.
- Fit plug into socket and tap into sleeve until latch engages.
- Fit socket onto plug and tap into sleeve until latch engages.

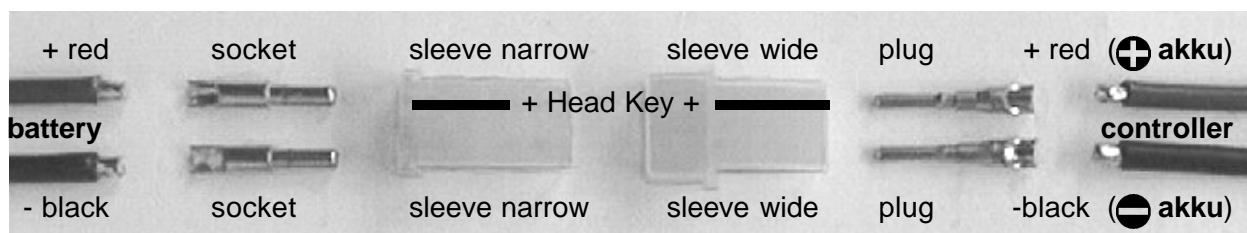
### 7.3 MPX gold-contact connector system (green or red); max. load ~30A



**Fit** the connectors in the order shown above; the contacts are soldered as follows:

- To center the contacts fit plug and socket together before soldering.
- Tin all 6 exposed solder terminals of plug or socket.
- Fit cable end into triangle of contacts, solder to all three solder terminals.
- Position heat-shrink sleeve and shrink over joint.

### 7.4 2,0 / 2,5 mm gold-contact connector system; max. load ~30A



**Fit** the connectors in the order shown above; the contacts are pressed in as follows:

- Place plastic sleeve vertically on table, grip end up.
- Push contact down into sleeve.
- Place 2.5mm wide screwdriver blade on top of cable solder joint inside sleeve.
- Tap screwdriver to press contact into sleeve until latch engages.

### 7.5 Deans connector system; rating up to 50 A

